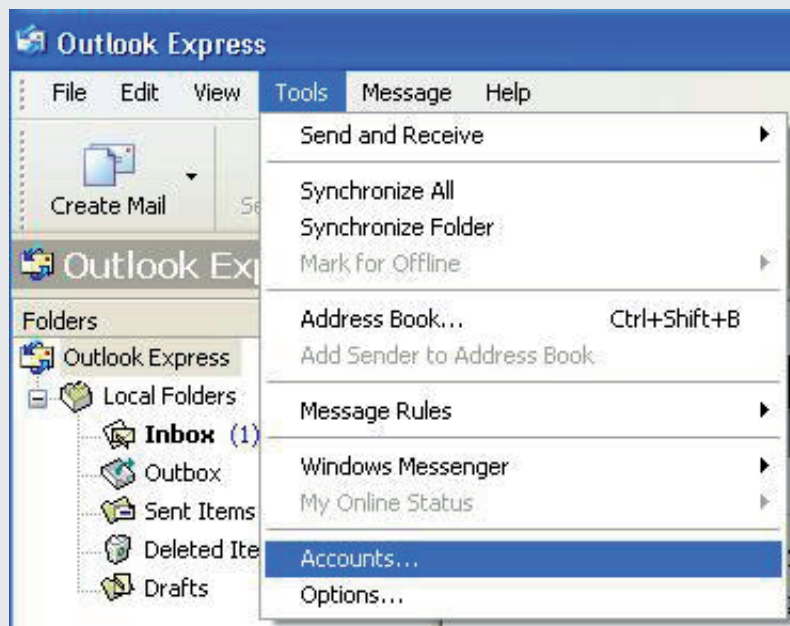
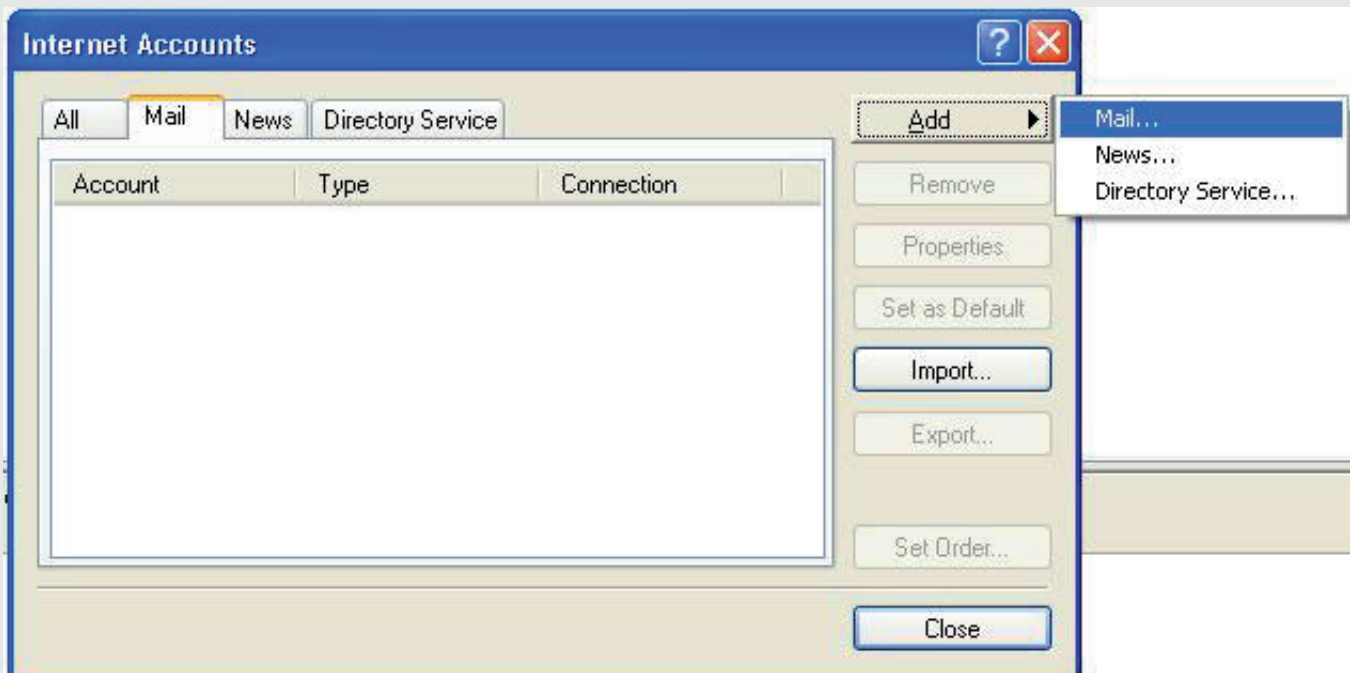


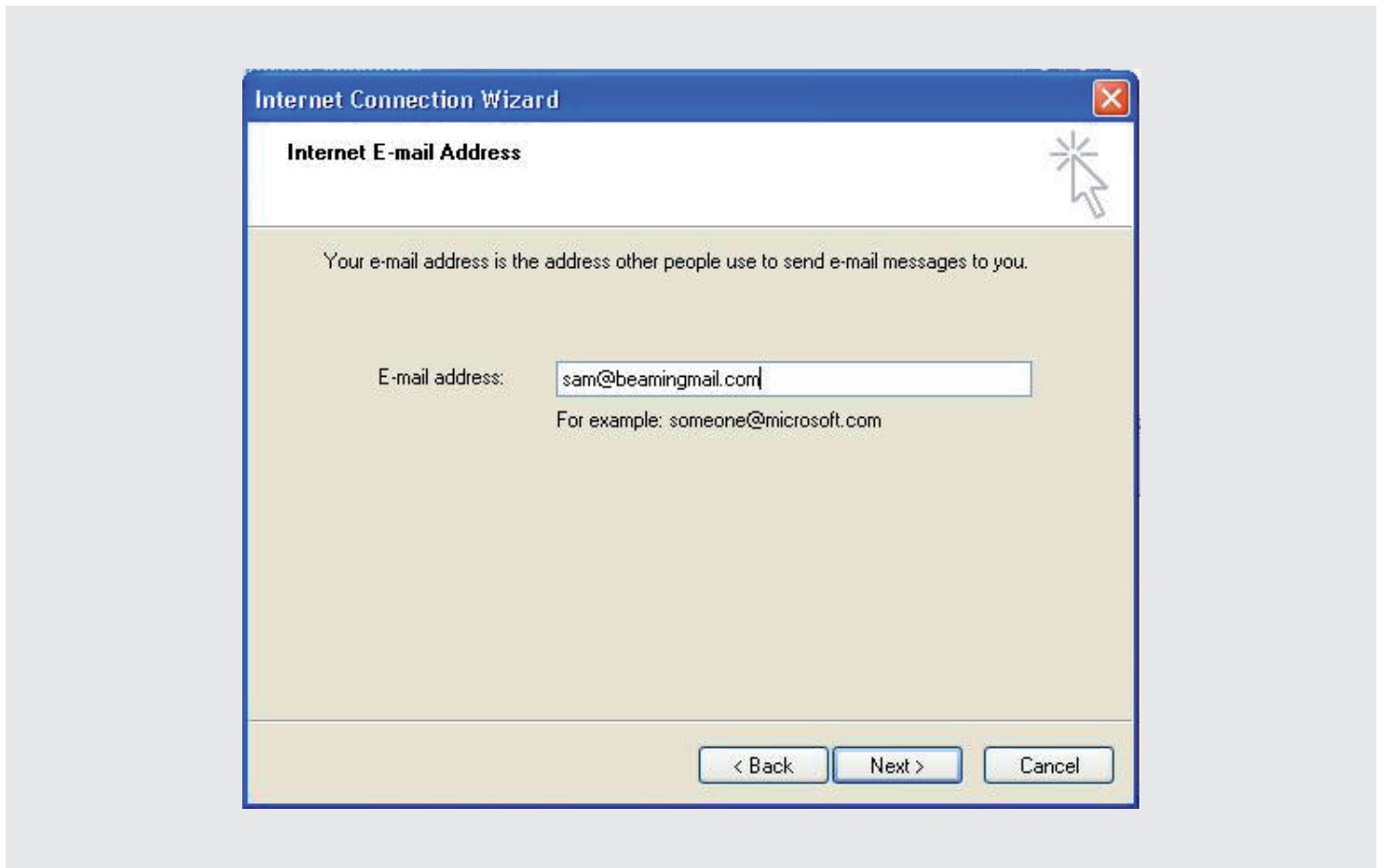
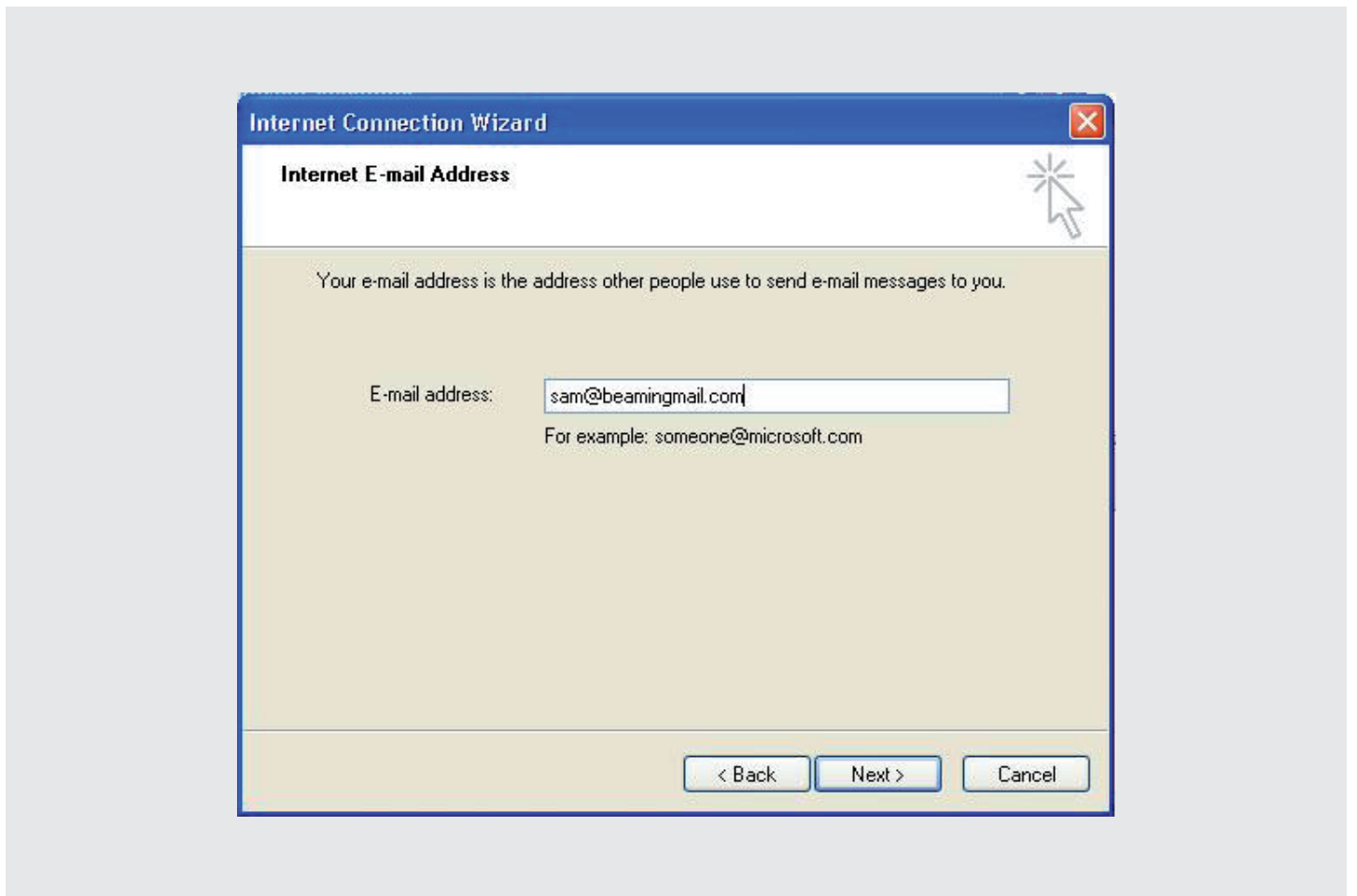
Microsoft Outlook Express Setup

Step 1 Click on **Tools** and then click **Accounts**



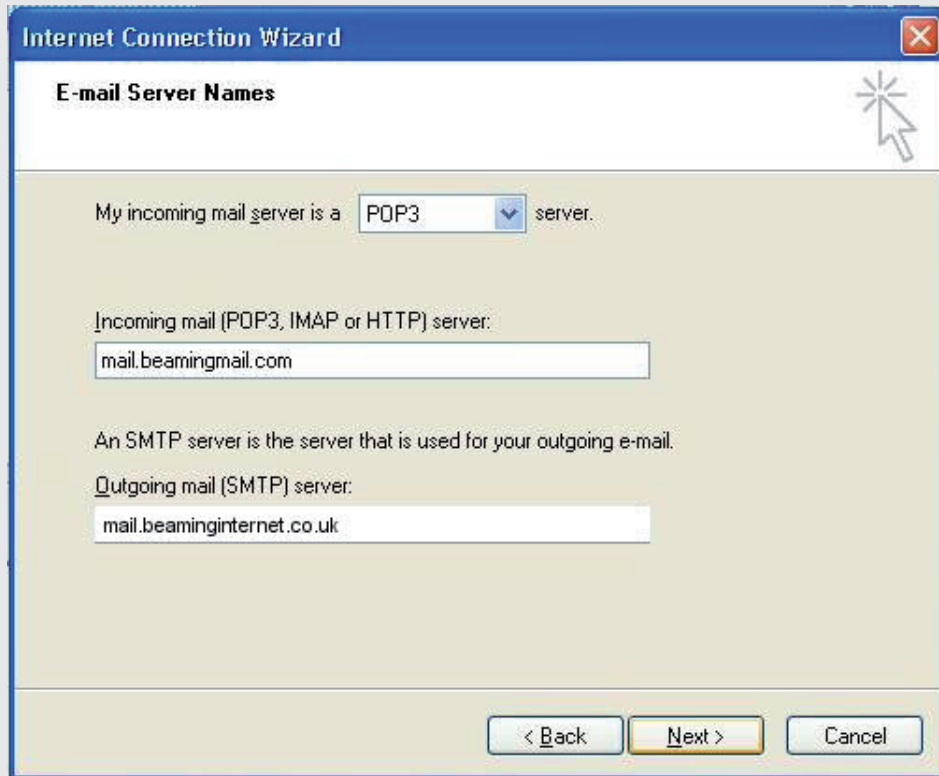
Step 2 Click on **Add** and then click **Mail**



Step 3Type your name and then click **Next****Step 4**Type your email address and then click **Next**

Step 5

Select POP3 and enter the email server addresses below. Then click **Next**



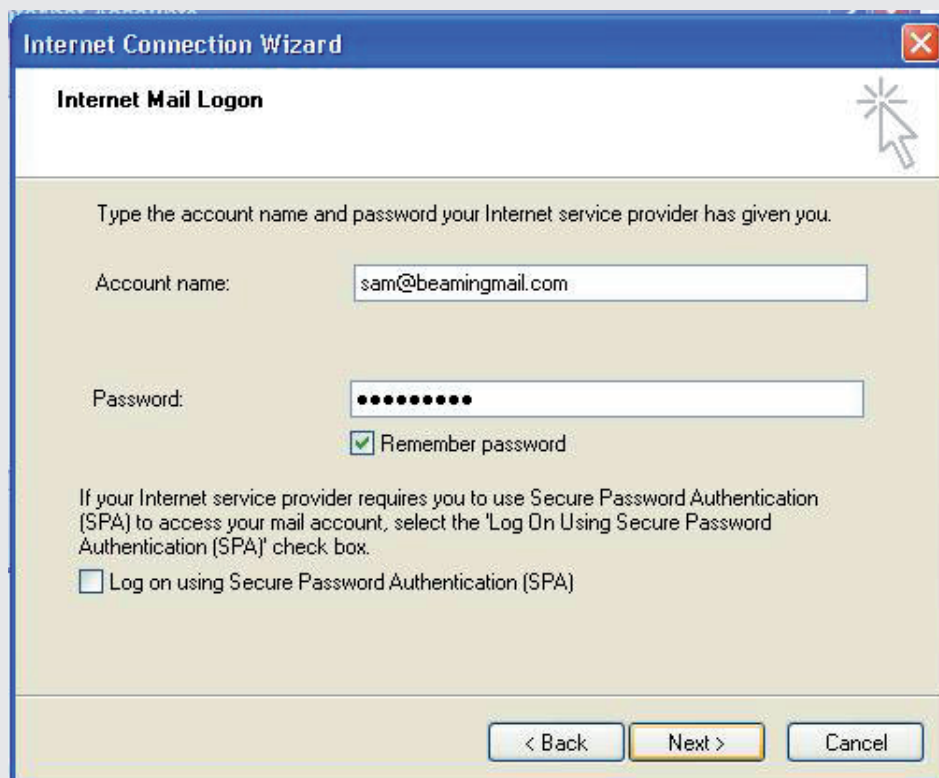
The screenshot shows the 'Internet Connection Wizard' window with the title 'E-mail Server Names'. It contains the following text and fields:

- My incoming mail server is a server.
- Incoming mail (POP3, IMAP or HTTP) server:
- An SMTP server is the server that is used for your outgoing e-mail.
- Outgoing mail (SMTP) server:

At the bottom, there are three buttons: '< Back', 'Next >', and 'Cancel'.

Step 6

Type your full email address as the account name and enter your password. Then click **Next**



The screenshot shows the 'Internet Connection Wizard' window with the title 'Internet Mail Logon'. It contains the following text and fields:

- Type the account name and password your Internet service provider has given you.
- Account name:
- Password:
- Remember password
- If your Internet service provider requires you to use Secure Password Authentication (SPA) to access your mail account, select the 'Log On Using Secure Password Authentication (SPA)' check box.
- Log on using Secure Password Authentication (SPA)

At the bottom, there are three buttons: '< Back', 'Next >', and 'Cancel'.